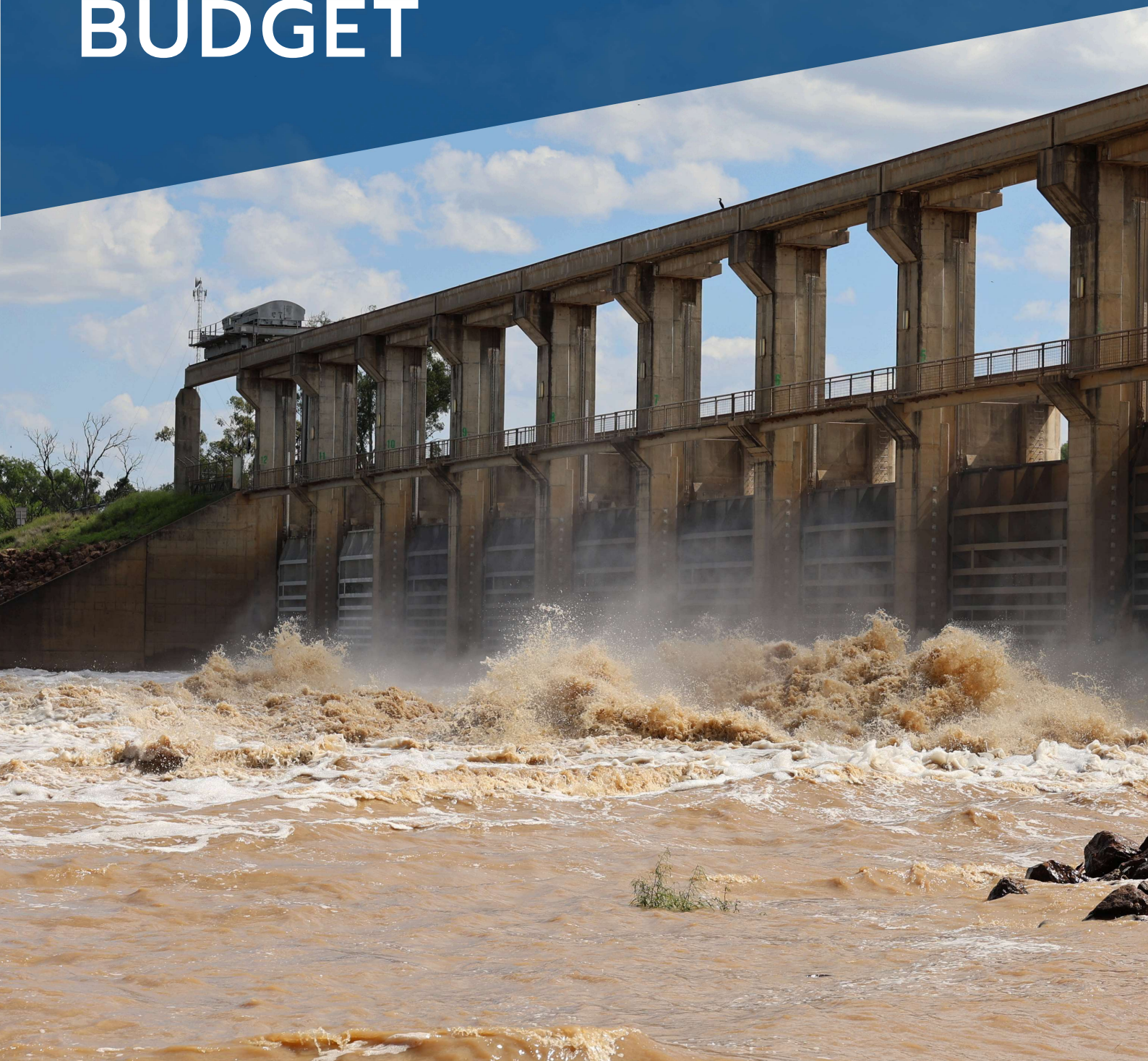


2024-25 BUDGET



UTILITY CHARGES





Utility Charges 2024-2025

WATER CHARGES 2024-25

per charging unit per	Unconnected Water	Water Connection
St George	\$12.87	\$12.87
Thallon	\$11.79	\$11.79
Nindigully		
Dirranbandi	\$12.87	\$12.87
Hebel	\$11.79	\$11.79
Bollon	\$11.79	\$11.79
Rural	\$11.79	\$11.79

Note: Refer to Revenue Statement 2024-2025 for further details on charging units for type of service

Excess Water Charges (charged per KL on usage above allocation)	2024-25
Rural Residential Bore Water	\$0.54
Untreated Water (<i>Dirranbandi, Thallon, Bollon & Rural</i>)	\$0.15
Dirranbandi Treated Water	\$1.46
St George Bore Water	\$0.58
St George River Water (<i>Residential</i>)	
1,501 - 2,000 KL	\$0.53
2,001 - 2,500 KL	\$0.80
>2,500 KL	\$1.06
St George River Water (<i>Rural Residential*</i>)	
1,795 - 2,294 KL	\$0.53
2,295 - 2,794 KL	\$0.80
>2,794 KL	\$1.06

*refer to Appendix B Map 2 circled area described as Rural Residential Water Charging Area (Willow thal and Rhea Roads)

Note: Refer to Revenue Statement 2024-2025 for further details on how the excess charges are applied.



Utility Charges 2024-2025

MUNGINDI WATER CHARGES	2024-25
Water Access Charge	\$270.97
Unconnected Water Access Charge (vacant land)	\$135.48
Water Consumption per kilolitre - 0 to 750 KL	\$1.72
Water Consumption per kilolitre - over 750 KL	\$2.52
* includes a 5% administration fee on charges provided by Moree Plains Shire Council NSW	

MUNGINDI WASTE CHARGES	2024-25 *
Domestic Waste	
Domestic Waste Collection	\$420.77
Vacant Waste Charge	\$105.19
Domestic Waste – Additional Services	
Upgrade – Domestic Large Bin (240L)	\$91.53
Upgrade – Recycle Bin (360L)	\$24.38
Additional Service – Organic Bin (240L)	\$24.38
Additional Service – Recycle (240L)	\$109.78
Additional Service – Recycle (360L)	\$134.21
Bin Replacement	\$82.69
Non Domestic Waste	
Commercial Waste Collection	\$277.70
Additional service – Waste (240L)	\$186.60
Upgrade - Recycle Bin (360L)	\$24.38
Request Organic Bin (240L)	\$24.38
Waste Management Levy	
Urban Waste Management Levy	\$339.02
Rural Waste Management Levy	\$169.51
* includes a 5% administration fee on charges provided by Moree Plains Shire Council NSW	



Utility Charges 2024-2025

CLEANSING CHARGES 2024-25				
	Base Cleansing Service	General Waste Service	Recycling Waste Service	Extra Cleansing
St George	\$639.24	\$430.42	\$122.60	\$553.02
Thallon	\$639.24	\$430.42	\$122.60	\$553.02
Nindigully	\$639.24	\$430.42	\$122.60	\$553.02
Dirranbandi	\$639.24	\$430.42	\$122.60	
Hebel	\$152.85	\$430.42	\$122.60	
Bollon	\$639.24	\$430.42	\$122.60	
Rural	\$639.24	\$430.42	\$122.60	\$553.02

WASTE WATER CHARGES 2024-25			
	Unconnected Waste Water	Urban Waste Water Connection	Urban Non Res Waste Water (per pedestal)
St George	\$234.60	\$695.51	\$303.58
Thallon			
Nindigully			
Dirranbandi	\$234.60	\$695.51	\$303.58
Hebel			
Bollon	\$234.60	\$695.51	\$303.58
Rural			