



FACT SHEET – BORE & RIVER WATER

WATER UTILITY CHARGES IN 2022/23 – ST GEORGE

Council adopted its budget at a special meeting on 28 June 2022. This information fact sheet is to inform the residential and rural residential property owners in St George of changes to their bore and river water charges.

Changes to your water charges include:

1. An increase of 6% on water charges for all applicable properties based on the consumer price index and full cost recovery.
2. Changes were made to the Bore and River Water Access Charges for residential properties in the township of St George to itemise the bore and river water access charge - 70% for river water and 30% for bore water where a property has two connections. Refer to the map shown at the end of this fact sheet for the water charging area.
3. Council will commence charging for excess river water usage over an allocation of 1500 kilolitres. This will be charged in arrears for the 2022/2023 financial year and appear on the rates notice in August 2023. Council will provide consumption notices throughout the year to assist residents to monitor their river water usage.
4. Council will continue to charge excess water for bore water usage over and above the relevant allocation.

All figures quoted in this fact sheet are annual figures and $\frac{1}{2}$ will be levied in August and $\frac{1}{2}$ in February of each financial year. Excess water charges will be charged annually in the August rates notice.

Base Water Charge

The base water access charge on your rates notice will increase by 6%. It will display differently if you are on a residential or rural residential allotment in the township of St George. Last year it was itemised as 70% bore and 30% river. This has been revised based on actual costs of the water services and will now be itemised as 70% for River and 30% for Bore. In other words, the charge will increase from \$10.80 (in St George) to \$11.45 per unit (representing the 6% increase only). It will show in the rate notice as Bore Water Access and River Water Access Charge for residential and rural residential properties in St George town area.

Example of Calculations

\$11.45 x 98 units = \$1122.10 per annum or \$561.05 per rate levy (all water connections)

\$8.015 x 98 units = \$785.47 per annum or \$392.73 per rate levy (river water portion)

\$3.435 x 98 units = \$336.63 per annum or \$168.31 per rate levy (bore water portion)

If you use in excess of 294Kl of bore water then you will receive a charge at the rates below.

Excess Water	2022/23
Rural Residential Bore per kilolitre excess charge above allocation	0.484538
St George Bore per kilolitre excess charge above allocation	0.519992

If you use in excess of 1500Kl of river water then you will receive a charge at the rates below. Note that the average residential property uses approximately 800Kl per annum and will therefore not see any charges on their rate notice.

St George River Water (Residential and Rural Residential) *	New charges
Excess river water consumption per kilolitre >1501KL <2000KL	0.50
Excess river water consumption per kilolitre >2001KL <2500KL	0.75
Excess river water consumption per kilolitre >2500KL	1.00



FACT SHEET – BORE & RIVER WATER

Council will provide consumption notices to inform residents of their river water usage so residents can monitor the amount of river water used.

Other charges:

Waste water utility charges will increase by 6% reflecting full cost recovery.

Waste utility charges will increase by 14.5% (referred to as cleansing charges and or the Environmental special charge for applicable properties in close proximity to landfills sites). The increase represents an increase in compliance and maintenance costs for our waste services.

When will this occur?

Council must set its rates and charges each financial year. The budget was adopted at its Special Meeting on 28 June 2022. Council levies rates in August 2022 and again in February 2023. Overall based on the information above a standard residential property will see an approximate \$120 per annum change in their rates notice plus any excess charges. Other increases will relate to land valuation changes and are limited to up to 20% on any increase arising from a land valuation change.

Why the change?

- To remain drought resistant and monitor our river water usage
- To be transparent in the type of water charges/services to be charged over a property that receives both river and bore water
- To provide a similar rate revenue base for council to maintain existing facilities and necessary services

Payment Options

- A payment arrangement can be agreed that will ensure no interest is accrued if the payment arrangement is met;
- Pre-payments can be made prior to levying by contacting Council; and
- Payment within the discount period will result in a 10% discount and this has been extended to 60 days for the August 2022 levy.

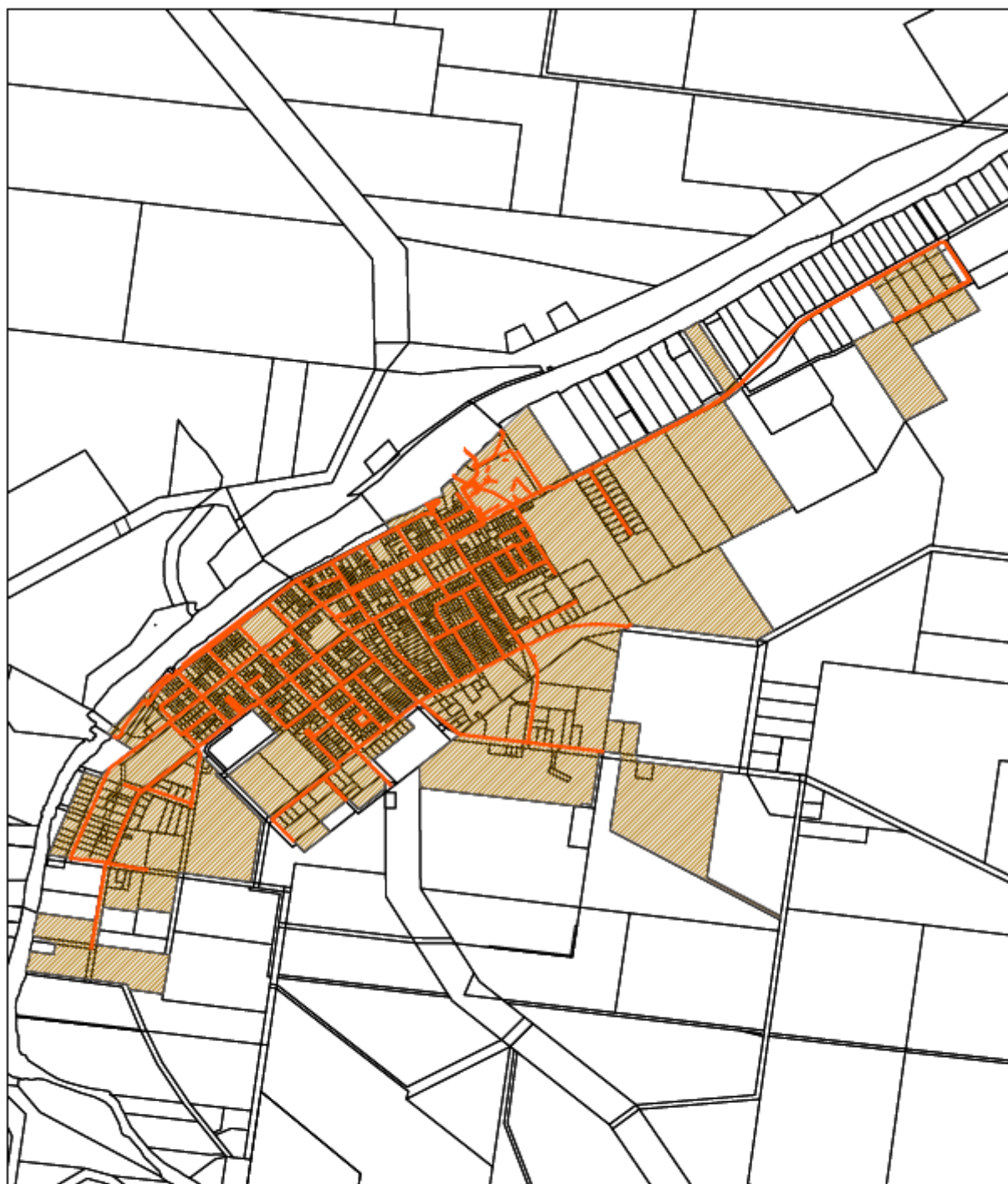
To receive your rates notice by email complete a change of address form located on our website.

For more information on each of the rating categories or changes refer to the Rates Fact Sheets at www.balonne.qld.gov.au or contact Council on (07) 46208888 or at council@balonne.qld.gov.au or by posted PO Box 201, St George, Qld 4822.

Disclaimer: this information is general information applicable to residential categories in the Balonne Shire. Information on specific properties is available on request – please quote your Assessment number or address.



FACT SHEET – BORE & RIVER WATER



St George Non Potable Water Charging Area

